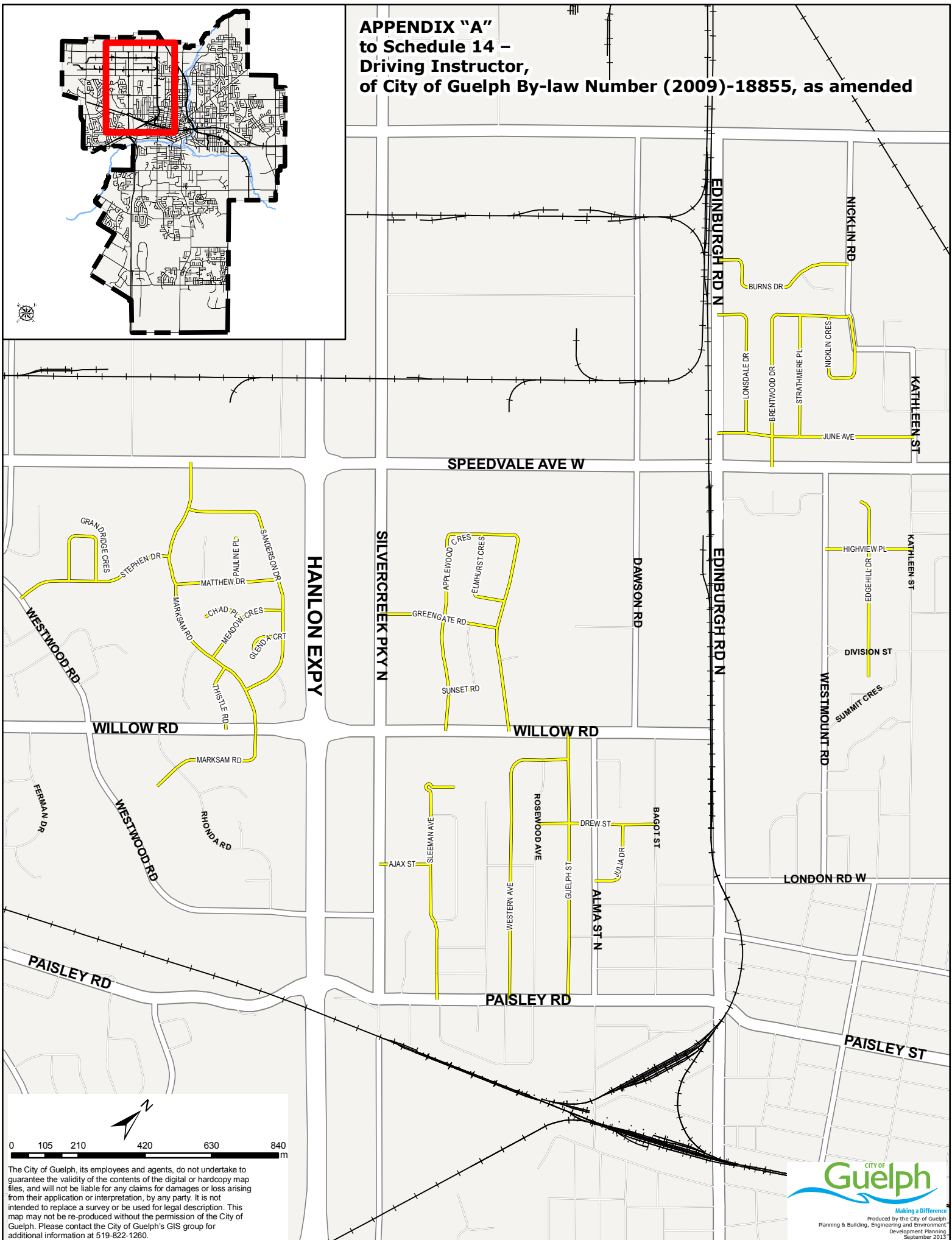
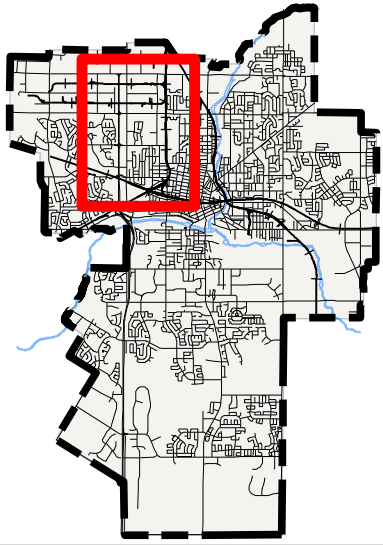


APPENDIX "A"
to Schedule 14 –
Driving Instructor,
of City of Guelph By-law Number (2009)-18855, as amended



The City of Guelph, its employees and agents, do not undertake to guarantee the validity of the contents of the digital or hardcopy map files, and will not be liable for any claims for damages or loss arising from their application or interpretation, by any party. It is not intended to replace a survey or be used for legal description. This map may not be re-produced without the permission of the City of Guelph. Please contact the City of Guelph's GIS group for additional information at 519-822-1260.